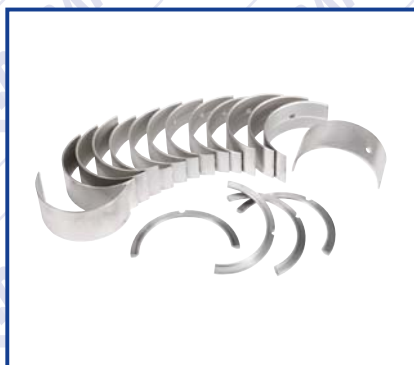




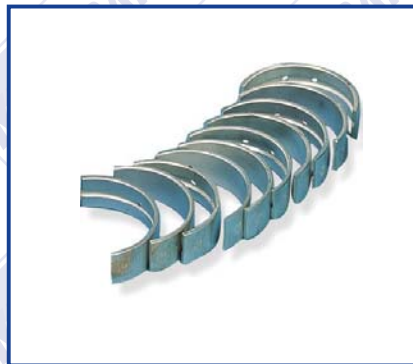
CRANKSHAFT MAIN & THRUST BEARINGS



ENGINE SERIES	ENGINE MODEL	DESCRIPTION	MAIN & THRUST BRG SET (STD)	(STD)	(0.25MM)	(0.50MM)	(0.75MM)	(1.00MM)
95	4D95/S4D95	MAIN BRG.		6204-21-8100	6204-29-8100	6204-28-8100	6204-27-8100	6204-26-8100
95	4D95/S4D95	THRUST BRG.		6204-21-8600	6204-29-8600	6204-28-8600	6204-27-8600	6204-26-8600
95	6D95L/S6D95L/SAA6D95L	MAIN BRG.		6204-21-8100	6204-29-8100	6204-28-8100	6204-27-8100	6204-26-8100
95	6D95L/S6D95L/SAA6D95L	THRUST BRG.		6204-21-8600	6204-29-8600	6204-28-8600	6204-27-8600	6204-26-8600
102	4D/S4D/SA4D/SAA4D102E	MAIN BRG.		6732-29-8110	6732-28-8100	6732-27-8100	6732-26-8100	6732-25-8100
102	4D/S4D/SA4D/SAA4D102E	THRUST BRG.				6731-21-8610		6736-28-8700
102	6D/S6D/SA6D/SAA6D102E	MAIN BRG.		6735-21-8100	6736-29-8100	6736-28-8100	6736-27-8100	6736-26-8100
102	6D/S6D/SA6D/SAA6D102E	THRUST BRG.				6731-21-8610		6731-21-8620
105	4D/S4D105/1/2/3	MAIN BRG. - 1,2,3		6130-21-8011	6130-29-8011	6130-28-8011	6130-27-8010	6130-26-8010
105	4D/S4D105/1/2/3	MAIN BRG. - 4,5		6130-21-8021	6130-29-8021	6130-28-8020	6130-27-8021	6130-26-8020
105	4D/S4D105/1/2/3	THRUST BRG.		6130-21-8500	6130-29-8500	6130-28-8500	6130-27-8500	6130-26-8500
105	4D/S4D105-5	MAIN BRG.		6136-21-8010	6136-29-8010	6136-28-8010	6136-27-8010	6136-26-8010
105	4D/S4D105-5	THRUST BRG.		6134-21-8050	6134-29-8050	6134-28-8050	6134-27-8050	6134-26-8050
105	6D/S6D105-1	MAIN BRG.	6136-21-8000	6136-21-8010	6136-29-8010	6136-28-8010	6136-27-8010	6136-26-8010
105	6D/S6D105-1	THRUST BRG.		6134-21-8050	6134-29-8050	6134-28-8050	6134-27-8050	6134-26-8050
108	S6D/SA6D108-1	MAIN BRG.		6221-21-8010	6221-29-8010	6221-28-8010	6221-27-8010	6221-26-8010
108	SAA6D108E-2A	THRUST BRG.		6221-21-8050	6221-29-8050	6221-28-8050	6221-27-8050	6221-26-8050
110	S6D/SA6D110-1	MAIN BRG.	6136-21-8000	6136-21-8010	6136-29-8010	6136-28-8010	6136-27-8010	6136-26-8010
110	S6D/SA6D110-1	THRUST BRG.		6134-21-8050	6134-29-8050	6134-28-8050	6136-27-8050	6136-26-8050
114	S6D/SA6D/SAA6D114E	MAIN BRG.		6742-01-5199	6742-01-5233	6742-01-5240	6742-01-5287	6742-01-5288
114	S6D/SA6D/SAA6D114E	THRUST BRG.			6742-01-5272	6742-01-5442		
125	6D/S6D/SA6D125-1	MAIN BRG.	6150-21-8000	6150-21-8010	6150-29-8010	6150-28-8010	6150-27-8010	6150-26-8010
125	6D/S6D/SA6D125-1	THRUST BRG.		6150-21-8050	6150-29-8050	6150-28-8050	6150-27-8050	6150-26-8050
125	6D/S6D/SA6D125E-2	MAIN BRG.	6150-21-8000	6150-21-8010	6150-29-8010	6150-28-8010	6150-27-8010	6150-26-8010
125	6D/S6D/SA6D125E-2	THRUST BRG.		6150-21-8050	6150-29-8050	6150-28-8050	6150-27-8050	6150-26-8050
125	SAA6D125E-3	MAIN BRG.	6150-21-8000	6150-21-8010	6150-29-8010	6150-28-8010	6150-27-8010	6150-26-8010
125	SAA6D125E-3	THRUST BRG.		6150-21-8050	6150-29-8050	6150-28-8050	6150-27-8050	6150-26-8050



CRANKSHAFT MAIN & THRUST BEARINGS



CRANKSHAFT MAIN & THRUST BEARINGS

ENGINE SERIES	ENGINE MODEL	DESCRIPTION	MAIN & THRUST BRG SET(STD)	(STD)	(0.25MM)	(0.50MM)	(0.75MM)	(1.00MM)
130	4D130-1	MAIN BRG.	6114-20-8010	6110-20-8070	6110-29-8070	6110-28-8070	6110-27-8070	6110-26-8070
130	4D130-1	THRUST BRG.		6114-20-8050	6114-29-8050	6114-28-8050	6114-20-8050	6114-26-8050
140	S6D/SA6D140-1	MAIN BRG.	6210-21-8000	6210-21-8010	6210-29-8010	6210-28-8010	6210-27-8010	6210-26-8010
140	S6D/SA6D140-1	THRUST BRG.		6210-21-8050	6210-29-8050	6210-28-8050	6210-27-8050	6210-26-8050
140	SA6D/SA6D/SDA6D140E-3	MAIN BRG.	6210-21-8000	6210-21-8010	6210-29-8010	6210-28-8010	6210-27-8010	6210-26-8010
140	SA6D/SA6D/SDA6D140E-3	THRUST BRG.		6210-21-8050	6210-29-8050	6210-28-8050	6210-27-8050	6210-26-8050
140	SA12D/SDA12V140-1	MAIN BRG. - 1,2,3,5,6,7	6215-21-8001	6215-21-8011	6215-29-8011	6215-28-8011	6215-27-8011	6215-26-8011
140	SA12D/SDA12V140-1	MAIN BRG. - 4	6215-21-8001	6215-21-8021	6215-29-8021	6215-28-8021	6215-27-8021	6215-26-8021
140	SA12D/SDA12V140-1	THRUST BRG.		6215-21-8050	6215-29-8050	6215-28-8050	6215-27-8050	6215-26-8050
140	SAA12V140-2/ZE2	MAIN BRG. - 1,2,3,5,6,7	6215-21-8001	6215-21-8011	6215-29-8011	6215-28-8011	6215-27-8011	6215-26-8011
140	SAA12V140-2/ZE2	MAIN BRG. - 4	6215-21-8001	6215-21-8021	6215-29-8021	6215-28-8021	6215-27-8021	6215-26-8021
140	SAA12V140-2/ZE2	THRUST BRG.		6215-21-8050	6215-29-8050	6215-28-8050	6215-27-8050	6215-26-8050
155	S6D/SA6D155-4	MAIN BRG.	6127-21-8002	6127-21-8071	6127-29-8071	6127-28-8071	6127-27-8071	6127-26-8071
155	S6D/SA6D155-4	THRUST BRG.		6127-21-8051	6127-29-8051	6127-28-8051	6127-27-8051	6127-26-8051
170	S6D/SA6D170-1	MAIN BRG.	6162-23-8000	6162-23-8010	6162-29-8010	6162-28-8010	6162-27-8010	6162-26-8010
170	S6D/SA6D170-1	THRUST BRG.		6162-23-8050	6162-29-8050	6162-28-8050	6162-27-8050	6162-26-8050
170	SAA6D170E-2A	MAIN BRG.	6162-23-8000	6162-23-8010	6162-29-8010	6162-28-8010	6162-27-8010	6162-26-8010
170	SAA6D170E-2A	THRUST BRG.		6162-23-8050	6162-29-8050	6162-28-8050	6127-27-8050	6162-26-8050
170	SA6D/SA6D170E-3	MAIN BRG.		6240-21-8100	6240-29-8100	6240-28-8100	6240-27-8100	6240-26-8100
170	SA6D/SA6D170E-3	THRUST BRG.		6162-23-8050	6162-29-8050	6162-28-8050	6162-27-8050	6162-26-8050
170	SA8V170-1	MAIN BRG.	6164-21-8001	6164-21-8011	6164-29-8011	6164-28-8011	6164-27-8011	6164-26-8011
170	SA8V170-1	THRUST BRG.		6164-21-8050	6164-29-8050	6164-28-8050	6164-27-8050	6164-26-8050
170	SA12V170-1	MAIN BRG.	6165-21-8001	6164-21-8011	6164-29-8011	6164-28-8011	6164-27-8011	6164-26-8011
170	SA12V170-1	THRUST BRG.		6164-21-8050	6164-29-8050	6164-28-8050	6164-27-8050	6164-26-8050
CUMMINS	NH220-C1	MAIN BRG.	6610-21-8010	6610-21-8070	6610-29-8070	6610-28-8070	6610-27-8070	6610-26-8070
CUMMINS	NH220-C1	THRUST BRG.		6610-21-8051	6610-29-8051	6610-28-8051	6610-27-8051	6610-26-8051
CUMMINS	N855-1, NTA 855-1	MAIN BRG.	6610-21-8010	6610-21-8070	6610-29-8070	6610-28-8070	6610-27-8070	6610-26-8070
CUMMINS	N855-1, NTA 855-1	THRUST BRG.		6610-21-8051	6610-29-8051	6610-28-8051	6610-27-8051	6610-26-8051

IT IS RECOMMENDED TO CHECK PART NUMBERS PRIOR TO ORDERING

All original equipment, manufacturers' names, part numbers, symbols, drawings, colours and descriptions are for reference purposes only, and it is not implied any part is that of these manufacturers. All efforts have been made to ensure that the information contained herein is correct. KM Products Europe Limited cannot be held responsible for its accuracy.